

Eurofins Announces New Laboratory in Perth

Eurofins is one of the most dominant players in the Global Laboratory marketplace and continues to expand its activities in Australia and across Asia-Pacific.

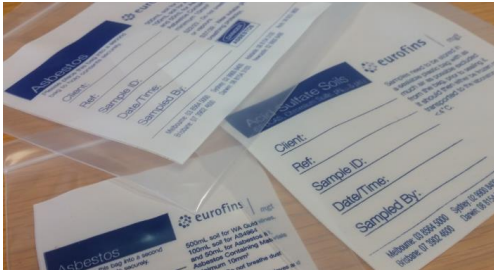
After successful entries in Australia and New Zealand in recent years, the company now strengthens its scientific efforts in Western Australia and opens a new laboratory in Perth.

ASBESTOS

Our Perth Laboratory will initially conduct NATA accredited identification of Asbestos in Bulk Materials (Soils and Building Products) and fibre counting in Air Filters as its primary focus and will be operational as of 1st November 2016.

Available TAT across Asbestos samples is as follows:

Soil	Fast TAT	1 Day (+50%)
		2 Day (+25%)
	Standard TAT	3 Day – No surcharge
Air Filters & Building Products		
	Standard TAT	2 Hours – No Surcharge



SPOCAS

Additionally, we will have capacity to provide locally Acid Sulfate Soil assays.

SHORT HOLDING TIME

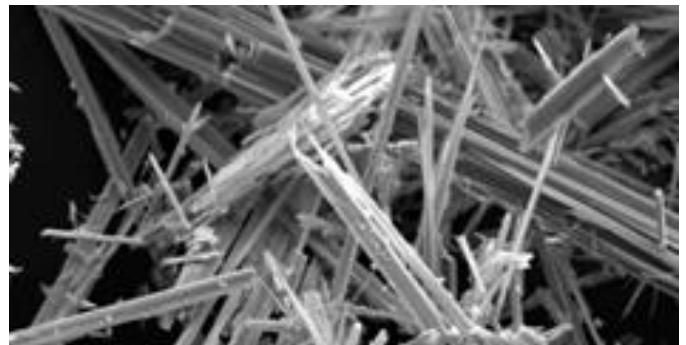
Short Holding Time chemical analysis in water and soil matrices will also be available locally to Perth clients.

Matthew Deaves will be heading up Eurofins | mgt's Perth operations, based in Kewdale conveniently located minutes away from the Perth domestic and international airport and a short distance from the CBD. Matt has previously managed both environmental laboratories throughout Australia and Asia-Pacific region and also Hazardous Management consultancy businesses and is a Licensed Asbestos Assessor; Matt brings

over ten years of practical and local business development experience to the job.

Joining Matt is Rhys Thomas who is returning to his home town of Perth after spending several years heading Eurofins | mgt's Sydney asbestos laboratory. Rhys brings a wealth of experience in Asbestos identification across all matrices.

Rhys will bring his experience and success in managing our Sydney fast TAT Asbestos Laboratory that has not missed the delivery of any TAT samples to clients for over 18 months = 100% TAT Reliability.



Our Managing Director Sefton McGraw said:

"We are very excited at the prospect of having the extra laboratory capacity to enable us to broaden our customer base and provide new products and services in Perth."

Matt Deaves' appointment as State Manager earlier this year and the transfer of our experienced asbestos analyst and former head of our Sydney asbestos laboratory Rhys Thomas will create a very strong team as our base for operations. We look forward to continue to expand this Laboratory in the coming months and delight our clients with enhanced service capabilities and Industry leading Quality & TAT."

Eurofins | mgt Expertise

If you would like to discuss technical details of this new laboratory operations then please contact Matthew Deaves otherwise contact your local Analytical Service Manager or one of our Business Development Team listed below for further details.

Global Leader - Results You Can Trust

EnviroNote No. 1068 - November 2016

Eurofins

Contacts for further Information

Rhonda Chouman +61 3 8564 5000
 Scott Carroll +61 2 9900 8410
 Matt Deaves +61 8 9251 9600
Technical Support
 Dr Bob Symons +61 2 9900 8400

Michael Horne
 Peter Gratwick

+61 499 810 009
 +61 448 176 035

Laboratories

Melbourne
 Sydney
 Brisbane
 Perth

Offices

Newcastle
 Adelaide
 Darwin

E: EnviroSales@eurofins.com

W: <http://www.eurofins.com.au/environmental-testing>